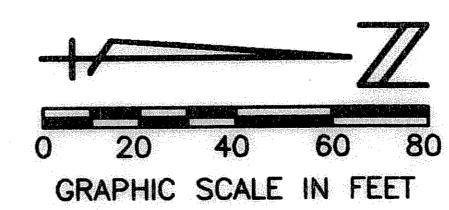


MIRASOL PARCEL TWENTY-FIVE

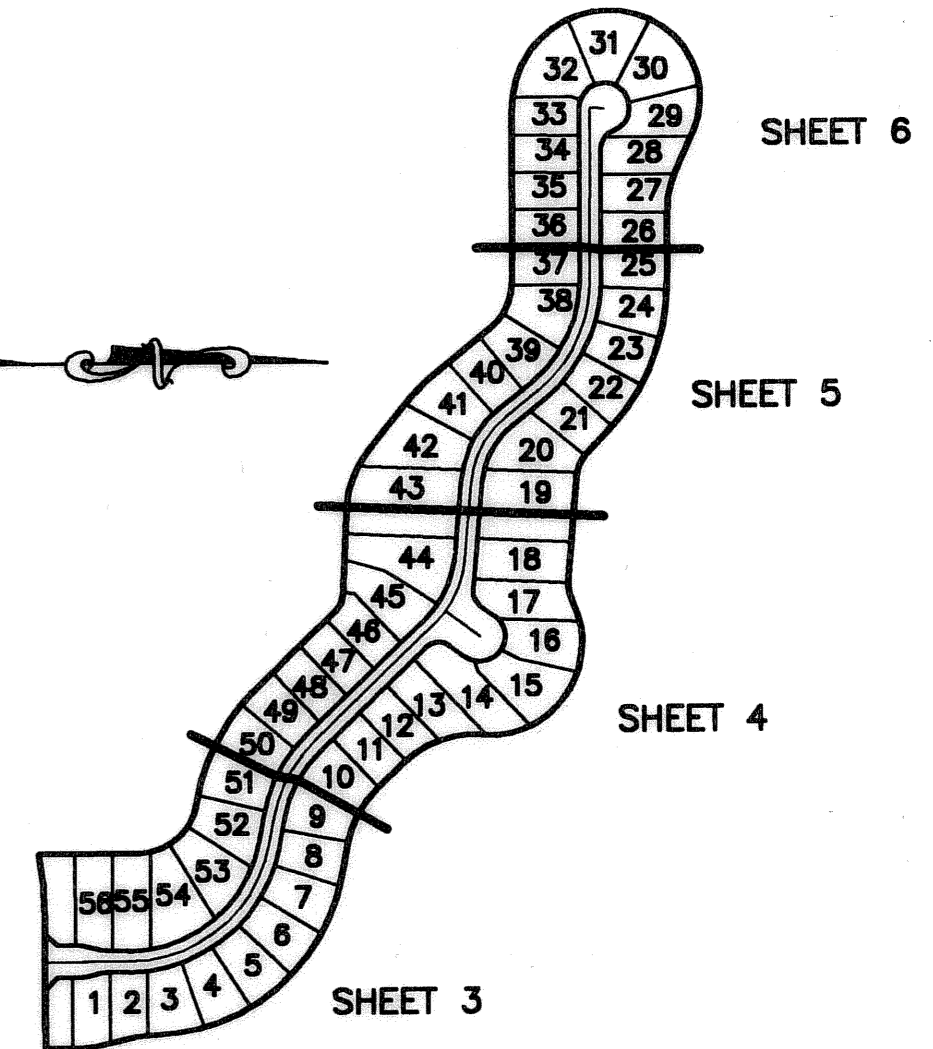
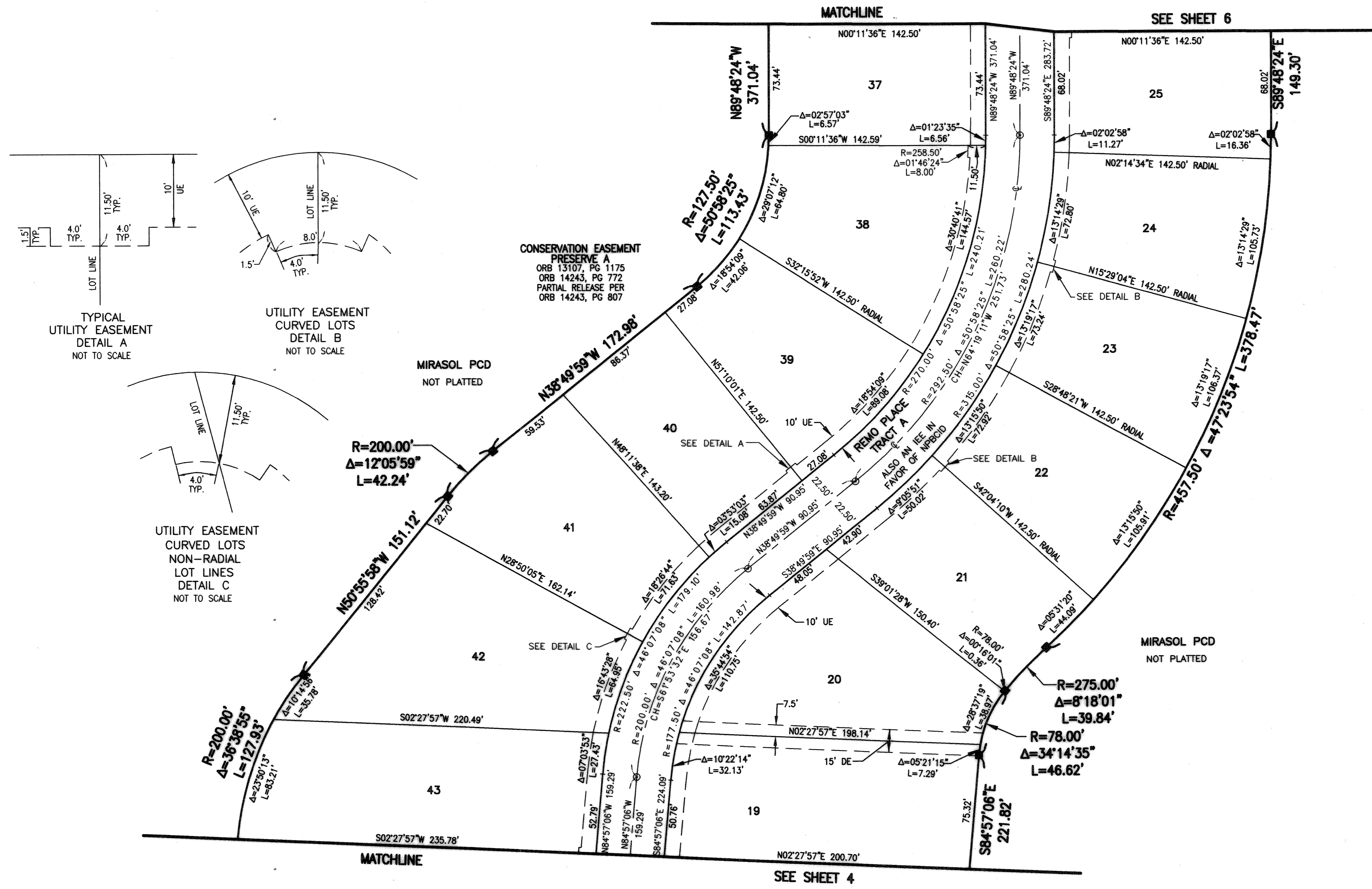
PART OF MIRASOL P.C.D.
BEING IN SECTIONS 03 AND 04, TOWNSHIP 42 SOUTH, RANGE 42 EAST,
CITY OF PALM BEACH GARDENS,
PALM BEACH COUNTY, FLORIDA
SHEET 5 OF 6

169

STATE OF FLORIDA
COUNTY OF PALM BEACH
THIS PLAT WAS FILED FOR
RECORD _____ DAY OF _____
AD, 2004 AND DULY RECORDED
IN PLAT BOOK _____ ON PAGES
_____ AND _____
DOROTHY H. WILKEN, CLERK
BY: _____, D.C.



CIRCUIT COURT SEAL



THIS INSTRUMENT WAS PREPARED BY MANUEL A. GUTIERREZ, P.S.M. IN THE OFFICES OF MOCK, ROOS & ASSOCIATES, INC., 5720 CORPORATE WAY, WEST PALM BEACH, FLORIDA 33407.

SCALE:
1"=40'
P.A. NO.:
99372.00
DATE:
APRIL 2004
DRAWING NO.
42-42-03-125

MOCK • ROOS
ENGINEERS • SURVEYORS • PLANNERS

5720 Corporate Way, West Palm Beach, Florida 33407
(561) 683-3113, fax 478-7248

MIRASOL PARCEL TWENTY-FIVE
PART OF MIRASOL P.C.D.
BEING IN SECTIONS 03 AND 04,
TOWNSHIP 42 SOUTH, RANGE 42 EAST,
CITY OF PALM BEACH GARDENS,
PALM BEACH COUNTY, FLORIDA

SHEET 5 OF 6

PLOT LINE: Dec 02, 2004, 3:45pm
 DATE: Dec 02, 2004, 3:45pm
 S:\proj\104023\dwg\p025r02.dwg
 REV 12-02-04
 CADD FILE:
 S:\proj\104023\dwg\p025r02.dwg